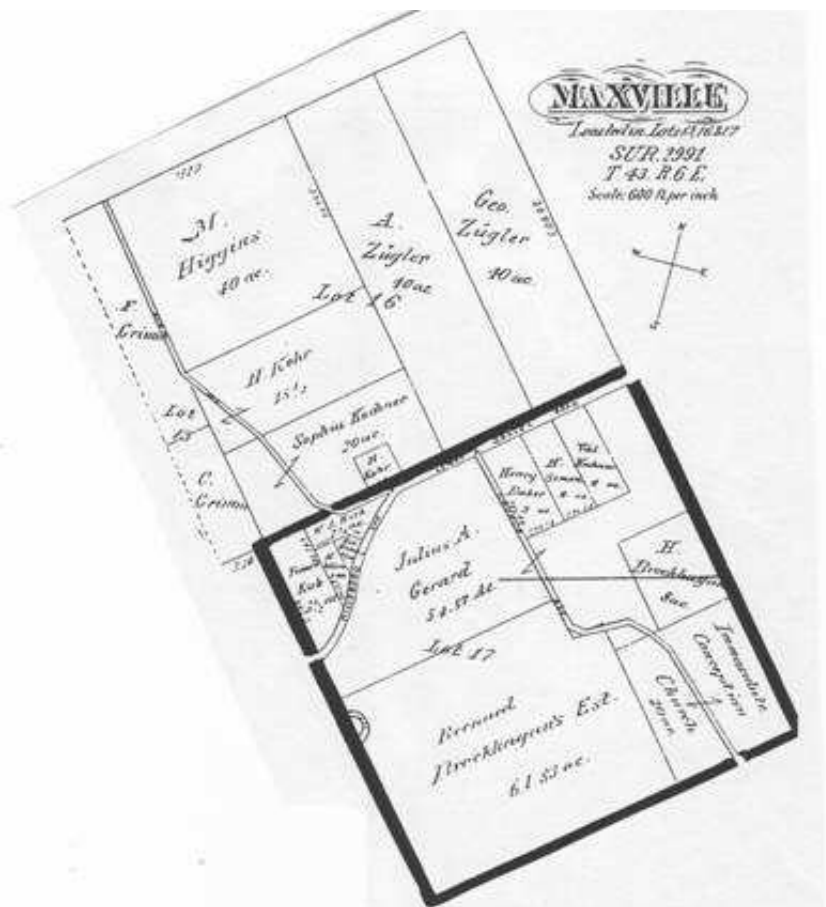


**Father Brockhagen and his Parishioners  
in front of the old stone church, circa 1874**

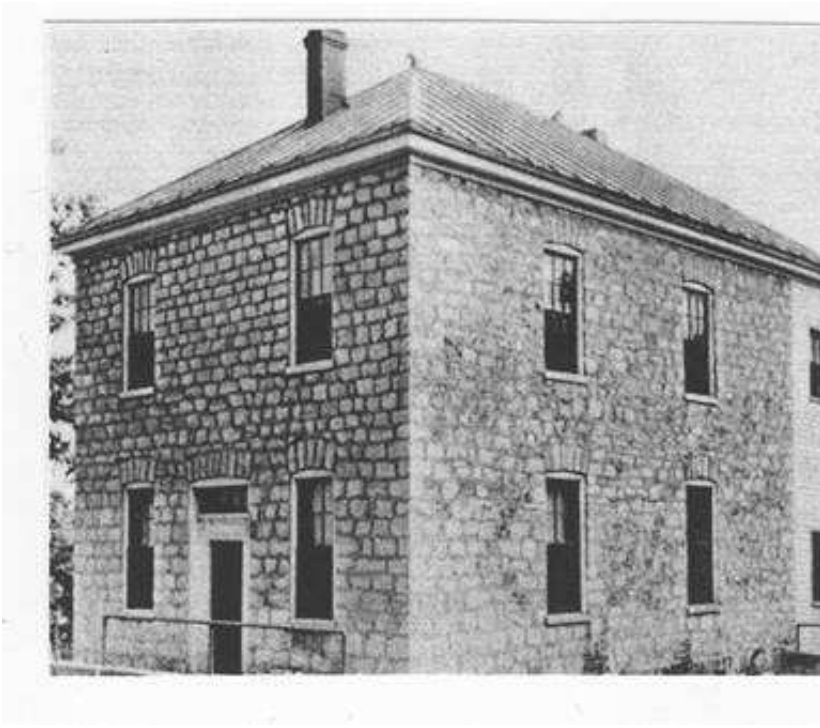


**Plat Map from 1876**



A REPRODUCTION OF THE PLAT MAP FOR MAXVILLE FROM 1875, SHOWING THE ORIGINAL PARISH LANDS (OUTLINED IN DARK BLACK) AND THE REMAINING 20 ACRES FOR THE PARISH. NOTICE FR. BROCKHAGEN'S 8 ACRES ON THE NORTHWEST CORNER AND HIS BROTHER BERNARD'S 61.83 ACRES ON THE SOUTHWEST. NOTICE, TOO, HOW OLD LEMAY FERRY WAS CALLED "HILLSBORO AND LEMAY GRAVEL ROAD"

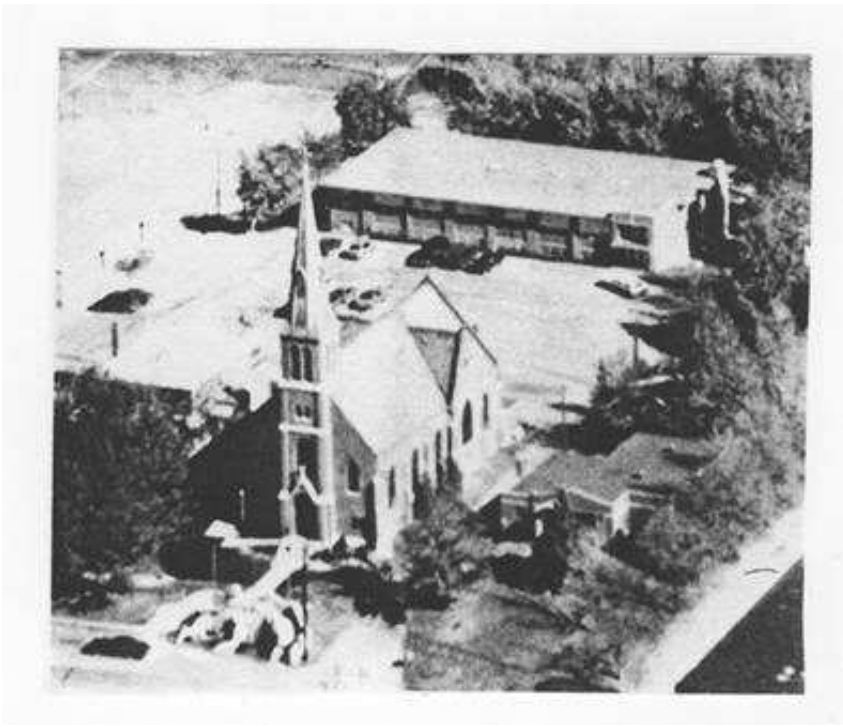
## Rock Convent and School – Built in 1871



**“Das Pfarrhaus”  
Rectory 1890 - 1935**



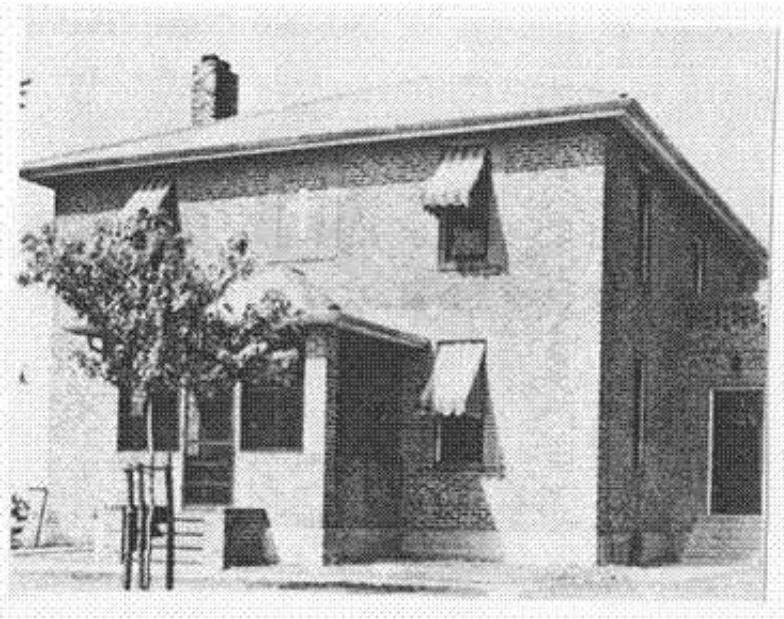
**Aerial Photo 1989**



**Corner Stone Laying  
of New School - 1957**



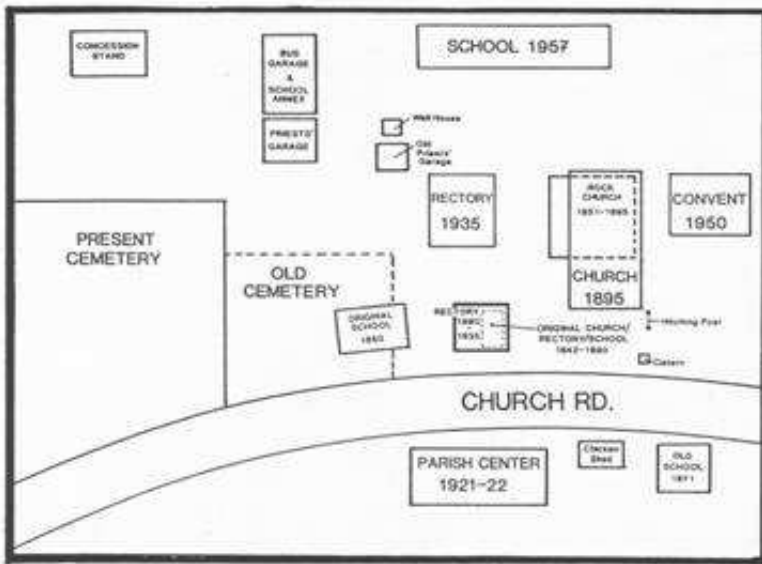
**Rectory - 1935**



## **Parish Grounds - 1958**



**Diagram showing locations and dates of origin of Parish buildings – up to 1990.**



371,  
ent.



Inside the Church Photos